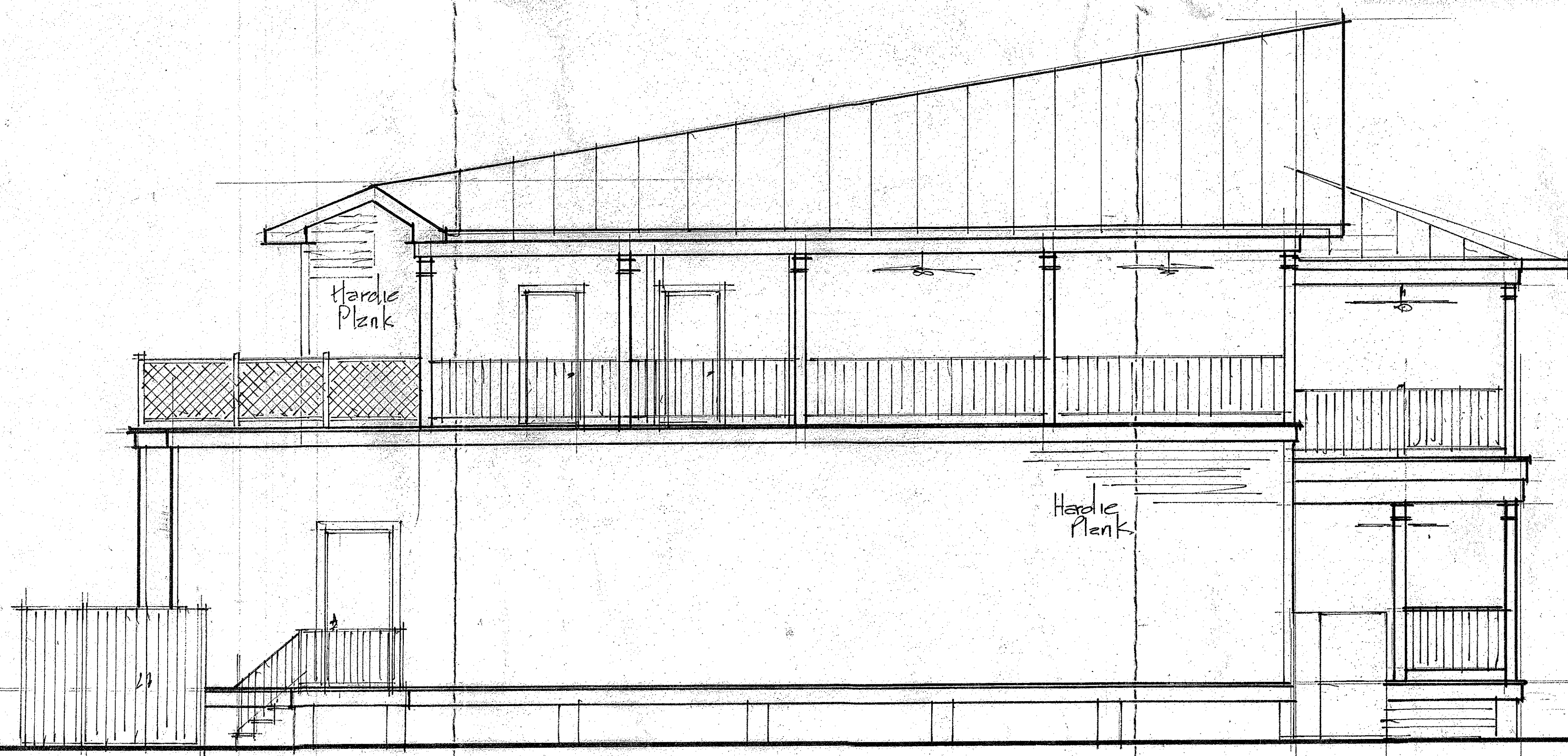


Right Side Facade Study
 $\frac{1}{4}'' = 1'-0''$



Front Facade Study
 $\frac{1}{4}'' = 1'-0''$



Left Side Facade Study
 $\frac{1}{4}'' = 1'-0''$

THESE PLANS AND SPECIFICATIONS HAVE BEEN PREPARED BY OR UNDER MY CLOSE PERSONAL SUPERVISION AND TO THE BEST OF MY KNOWLEDGE AND BELIEF, THEY COMPLY WITH ALL STATE, CITY AND/OR PARISH CODE AND/OR REQUIREMENTS, AND THAT I AM NOT GENERALLY ADMINISTERING THE WORK.

THIS DRAWING CONTAINS VALUABLE, CONFIDENTIAL, PROPRIETARY, AND TRADE SECRET INFORMATION OF CHARLES I SILBERNAGEL + ASSOCIATES, INC. NO REPRODUCTION OR OTHER USE OF THE DRAWINGS OR ANY OF ITS CONTENTS IS PERMITTED WITHOUT THE WRITTEN CONSENT OF CHARLES I SILBERNAGEL + ASSOCIATES, INC.

©COPYRIGHT BY CHARLES I SILBERNAGEL + ASSOCIATES, INC.
ALL RIGHTS RESERVED



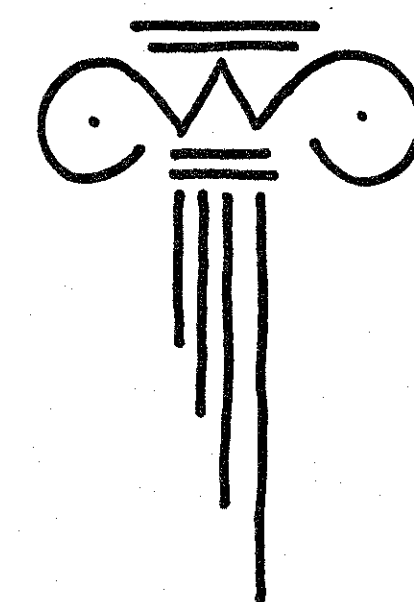
REVISIONS

CONCEPTUAL SKETCHES
CAD PRELIMINARY APPROVAL
CAD WORKING DRAWINGS
CONSTRUCTION DOCUMENTS

Mid City Seafood
New Orleans, Louisiana

CIS Architects

Metairie, Louisiana www.cisarchitects.com 504 454 3112



DATE
MAY 6, 2013
PROJECT NO.
1342
DRAWN BY

CHECKED BY
CHARLES SILBERNAGEL

SHEET

P 3